

## Mission Statement

The Purpose of LOMC is to be the Church in outdoor settings nurturing Christian faith and providing experiences connecting the Word of God with the World of God

# LOMC NEWSLETTER

LUTHERAN OUTDOOR  
MINISTRIES CENTER

WINTER 2003

## Board of Directors

Jim Granger, Chairman  
Pr. Paul Balaban  
Pr. Christopher Beamsley  
Pr. Jeff Clements  
Eric Dahlgren  
Gary Davis  
Ken Duckmann  
Lori Fagan  
Bishop Warren Friehtet  
Pr. James Gerth  
Jill Goldhammer  
Pr. Harold Grafe  
Dianne Gunderson  
Steve Homberg  
Bishop Paul Landahl  
Susan Lund  
Larry Lutey  
Bishop Gerald Mansholt  
Fernando Mercado  
Jean Morehouse  
Pr. Karl Otto  
Leona Peterson-Spear  
Stella Schroeder  
Katie Vahey  
Bishop Gary Wollersheim

## Staff

John Califf  
Executive Director  
Craig Watters  
Program Director  
Virgil Rocke  
Property Manager  
Minnette Scott  
Operations Director  
Jeanette Lawson  
Registrar  
Pam Stock  
Communications Director  
Linda Rennick  
Food Service Manager  
Tim Benedict  
Outdoor Education Director  
Thomas Williams  
Assistant Program Director  
Amy Frazier, Office Assistant  
Ken Dilbeck, Maintenance  
Lori Thomas, Maintenance  
Mary Jo Petrie, Maintenance

## A VISION FOR THE FUTURE

Being retired, I am often asked what I do with my time. My response is that I am involved with activities at LOMC. Often that response draws a puzzled look and a question, "What is LOMC?" My answer is that LOMC is a Bible Camp, a summer camp, a youth retreat center, an adult retreat center, an outdoor education facility, a family camp, a team building opportunity, a leadership training location and a provider of off-site Vacation Bible School.

Lutheran Outdoor Ministries Center is unique compared to most ELCA outdoor ministry programs. LOMC serves the largest geographical area in the country. More individuals and congregations are located in the LOMC service area, which includes all of Illinois and eastern Missouri, than any other ELCA outdoor ministry program.

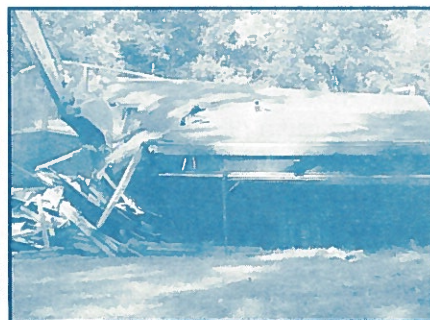
The LOMC property consists of 650 acres and is unique in that there are native plants on site that are found in very few places in Illinois. An abundance of wildlife is present among the pond, creek, forest, prairie and cornfields. Considerable area is available for future growth and development.

In order to prepare for the future needs of our congregations, the LOMC Board of Directors has appointed a long-range planning committee. The committee, chaired by Rev. Karl Otto, has sought input from present and past board members, clergy, staff, volunteers and campers. A strategic plan with specific goals will be developed. The process will be completed this spring. Needs that have been identified are the new bathhouse, a new retreat village for youth, a new administration building and a maintenance building. These needs will be addressed as funds become available. A new executive director to replace John Califf will require additional funds. For any of this to happen LOMC must develop a stable financial base by raising funds from among it's friends. Please pray for those involved in the decision making process.

The challenges are great. We know that our Lord is sufficient for our needs as he has shown so often in the past. Would you please join in the effort to make LOMC the outstanding outdoor ministry program it has the potential to be?

Your Servant In Christ, Jim Granger LOMC Board Chairman

## OUT WITH THE OLD...



The old LOMC Bathhouse comes down...

LOMC needs a new bathhouse before the 2004 summer camp season begins. The current bathhouse is at least 30 years old and does not meet new health department regulations. A campaign is underway to raise the \$100,00 needed to build the new 1,300 square foot facility.

## AND IN WITH THE NEW!



The new LOMC Bathhouse goes up!

Contributions may be sent to:

Lutheran Outdoor Ministries Center  
PO Box 239, Oregon, IL 61061 attention: Bathhouse

LUTHERAN OUTDOOR  
MINISTRIES CENTER  
P.O. BOX 239  
OREGON, IL 61061



## FROM THE EXECUTIVE DIRECTOR

In October I began my third year at LOMC. The board of directors has asked me to remain in this position until such time as a search for a permanent executive director can be responsibly carried out. Jim Granger, president of the LOMC Board of Directors, has explained the strategic planning process being undertaken by the LOMC Board of Directors, in a separate article in this newsletter. I am confident that as this process unfolds it will become clear what the qualifications and expectations of a new executive director should be. I look forward to the time when my successor joins the LOMC family and leads this wonderful ministry into the future. Meanwhile, I will continue to enjoy working with the board of directors, staff and many fantastic LOMC friends and volunteers.

One of my major goals has been to assist LOMC in achieving financial stability and to undertake a capital improvement program. In 2004, LOMC will celebrate 30 years being the Church in outdoor settings nurturing Christian faith and providing experiences connecting the Word of God with the World of God. Let us celebrate this anniversary by ensuring the future of the LOMC ministry. There is an immediate need to raise funds to bolster the operating fund, undertake the strategic planning process and create a reserve fund. In addition, the bathhouse must be fully funded. In order to accomplish these goals LOMC must embark upon a fund-raising campaign called *God's Great Design: Preparing For The Future Of LOMC*. The campaign will be in two phases. The first phase will begin early in 2004 with a \$500,000 goal to meet immediate needs. The second phase of the campaign will be in response to the capital needs identified in the strategic planning process.

We thank you for your past support. God has blessed LOMC with a marvelous site, fine staff and a passionate and committed board of directors. Your continued prayers are appreciated as the LOMC ministry moves forward to prepare to meet the future needs of ELCA members and congregations.

In His Service,

John Califf, Executive Director

### In Memorium

This issue of the newsletter is dedicated  
in memory of

Pamala Bredeson  
Sept. 15, 1987-  
October 12, 2003

## Thrivent Financial Giving Plus Program Benefits LOMC

The Thrivent Financial GivingPlus Program is a member participation program that supports Lutheran Outreach ministry organizations. Thrivent Financial will contribute 50 cents for every dollar that a member donates to an eligible and enrolled organization based on the following guidelines:

Thrivent Financial members who own a financial product, age 16 or older are eligible to participate in the GivingPlus Program. The giving limit is one gift per calendar year with a giving range of \$50 to \$400. Thrivent Financial members who do not own a financial product from Thrivent Financial, are eligible to participate in the GivingPlus Program for two years and can give one gift per year with a giving limit of \$50-\$100. If you are not a member of Thrivent Financial you can become an associate member for a \$10 yearly membership fee. You can contact LOMC or Thrivent Financial for an Associate Membership Application form. The application form along with \$10 should be sent to Thrivent Financial for Lutherans.

Contact LOMC at: PO Box 239, Oregon, IL 61061  
815-732-2220

Contact Thrivent Financial for Lutherans at 1-800-Thrivent  
or [www.thrivent.com](http://www.thrivent.com) for more information

## Summer Employment Opportunities

LOMC is currently seeking college age individuals who are interested in being Small Group Leaders for the Summer Camp Program. Qualifications are: an understanding of and willingness to live in the outdoors, and a commitment to Christ. If you are interested in applying for the position of Small Group Leader or if you know of someone who fits these qualifications, please contact Craig Watters, Program Director at 815-732-2220 for more information.

## LOMC 30th Anniversary

Keep Sunday October 10, 2004 open on your calendar! That is the date when LOMC will celebrate its 30th year of ministry and Autumn Fest. Events planned for the day will include: a museum of pictures and other memorabilia from the past 30 years, a brat lunch, a special worship service and the usual Autumn Fest activities. This event is for everyone; former staff, volunteers, former and current campers, donors and congregations. More details will be published in the Spring newsletter. Items needed for the museum include: pictures, staff shirts, shirts purchased in the LOMC store, and items important to the history of LOMC and its ministry. Call Pam Stock at the LOMC office to offer items for the museum. All items will be returned after the event.



# AUTUMN FEST 2003



*Bob Kuhn of Oregon demonstrates chair caning*



*Ted Lawson of Oregon discussing deer and their habits*



*Tom Hill of Atwood Environmental Center presenting his Raptor Program*



*The LOMC Swing Choir Tour*



*Dawn Andermann of Steward explains weaving basics to guests*



*Grinding corn using a mano and a matate*



*Kids and adults making hand dipped candles and corn husk dolls*



*Volunteer Carol Schoeck helps reel in a whopper*



*Making cider the old fashioned way*



*Guests canoeing on Paul's Pond*



*Sally Baumgardner and "The Professor", a Fox snake, with LOMC guests*



*Fun in a lycra tube*



*Historical tools and other items were displayed by Alan Harrison of Dixon*

## Thrivent Financial for Lutherans Volunteers Help At Autumn Fest

Volunteers from Thrivent Financial Chapters in Lee, Whiteside, Ogle, Chicago West Cook, and Stephenson counties assisted with the LOMC Autumn Fest 2003. Volunteers greeted guests, directed parking and helped with guest registration, arts and crafts, pumpkin carving and cider pressing. Volunteers also cooked brats, served and cleaned up at lunch and helped with set-up the day before the event.

Thrivent Financial for Lutherans will be supplementing Autumn Fest contributions up to \$17,200 with an additional \$8,600 through the Care In Regions activity.

A Ministry of ELCA Congregations  
in Illinois and Missouri

## LUTHERAN OUTDOOR MINISTRIES CENTER

P.O. Box 239  
Oregon, Illinois 61061

Address Service Requested

NON-PROFIT ORGANIZATION  
U.S. POSTAGE  
**PAID**  
PERMIT NO. 29  
OREGON, IL 61061



**Recycled paper**  
Help save our environment

### EVENTS CALENDAR

#### Youth Events For Congregations

Epiphany Confirmation Retreat	January 2-4	7-9th grade
Sr. High Daybreak Retreat	January 17-19	9-12th grade
Lenten Confirmation Retreat	March 5-7 or March 19-21	7-9th grade
Lenten Confirmation	March 12-13	4-6th grade
Spring Adventure Day	April 17	K-3rd grade

#### Adult and Family Events

Spring Older Adult Retreat	April 25-27
Turtle Search Sunday	April 27
Memorial Day Work Weekend	May 28-31

For more information contact LOMC at 815-732-2220

### Summer Camp Begins June 13, 2004

Summer Camp Brochures will be mailed out the last week of January.

### LOMC Wish List

Adobe Pagemaker Computer Program	Power Point Projector
220 volt Window Air-Conditioners	Stainless flatware
Bird Seed/Bird Feeders	Golf Cart— Gas operated
Silva Compasses	4x4 Pick-up Truck or Jeep
Magnifying glasses	Digital Camera
	Wooden Bookshelves

### Welcome The New LOMC Food Service Manager

On October 10, Linda Rennick became the new Food Service Manager at LOMC. Linda was attending Sunday services at New Life Lutheran, Bolingbrook when she saw an announcement in the bulletin stating the job opening. After asking what LOMC was she became very excited and felt called to apply. Her 14 years in food service and her love for camping ministry made the position a perfect fit for Linda and for LOMC. Linda believes in healthy homemade meals. She feels that food is a gift from God and that by sharing good food prepared with love and gratitude she is ministering to LOMC guests. The LOMC staff and guests, who have eaten her meals, agree!