

# Lutheran Outdoor Ministries Center Presents :



**Fueling the Fire!**  
**2005**  
**Summer Brochure**

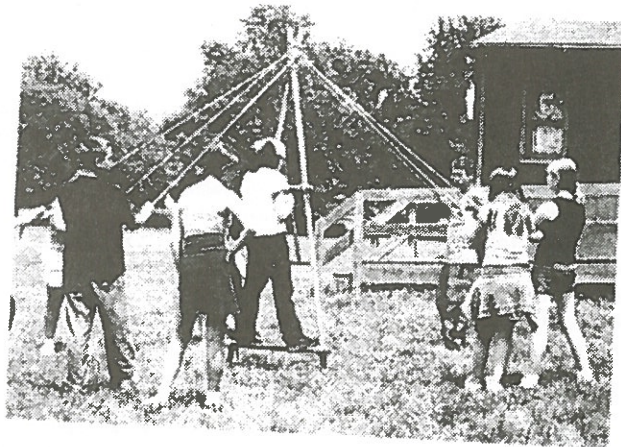
*A surefire way to friends!*



*And  
FUN!*



*All in the safety of God's  
Family!*

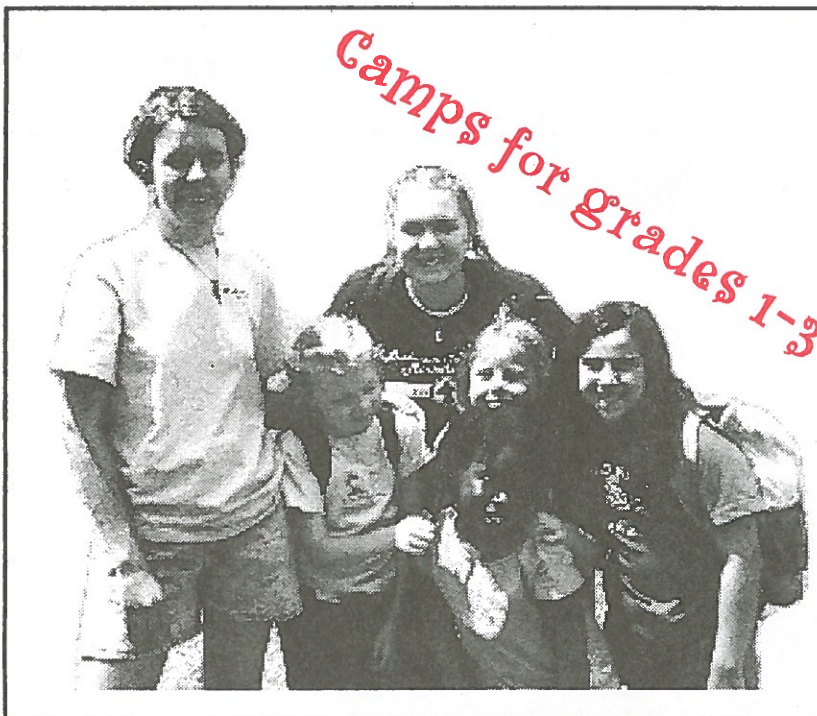


P.O. Box 239  
Oregon, IL  
61061  
815-732-2220  
lomc@essex1.com

## ***Mission Statement***

*The purpose of LOMC is to be the Church in outdoor settings, nurturing Christian faith and providing experiences connecting the Word of God with the World of God.*





*Camps for grades 1-3*

**Early Ventures: Gr. 1-3**

July 3-8, July 10-15

July 17-22

\$255 **Full week**

July 31-Aug. 2, Aug. 3-5

\$130 **1/2 week**

If you're young, curious, and ready to go, Early Ventures is a program just for early elementary age children. You'll get special attention in a small group of campers as you do many exciting things like swimming, hiking, canoeing, crafts and games. You live in a retreat house with your leader.



**Day Camp Gr. K-6**

June 27 - July 1,

July 25-29, Aug. 8-12

\$90

A chance for young people to experience camp without the added pressure of staying overnight. Swimming, hiking, Bible studies, crafts and games are all included from arrival at 8:30 a.m. until at 4:30 p.m. Call LOMC for more information.



**Camping options for 4th- through 6th-graders**

**Discoverer**

June 19-24

July 3-8

July 10-15

July 24-29

July 31- Aug. 5

\$235

Curious about the outdoors? You can learn about it at Discoverer Camp. From making your own banana boat desserts to controlling a canoe on the Rock River, you'll discover what fun it is to live



**Fishing I:**

June 19-24

\$240

You will live near Paul's Pond at LOMC so you can



rise early to catch those big fish. Bring along your own fishing gear and your lucky hat. Fishing I is for you if you are inexperienced and want to learn the basic "how-to's" of baits, casting and lures.

**Venture I:**

June 26-July 1

July 3-8

July 17-22, July 24-29

July 31-Aug. 5

Aug. 7-12

\$255

Venture I camp introduces you to a wide variety of camp activities such as hiking, swimming, crafts, recreation and perhaps an overnight campout under the starry skies of LOMC.

**Encounter I:**

July 10-15

\$255

Are you ready to take the next step? In addition to swimming, hiking and canoeing, specialized outdoor activities combined with theme-based



Bible studies challenge youth to encounter God and each other. Encounter I is for younger campers and helps them connect with God's Word through a variety of exciting nature-based activities.

**Sports I:**

July 3-8

July 10-15

Aug. 7-12

\$255

Sports camp offers softball, soccer, basketball, swimming, volleyball and more. Look no further if you enjoy playing and learning familiar and new team and individual sports.



**Trail Riders I:**

June 26-July 1

\$455

Saddle up for this camp. Trail Riders camp will add care of horses, barn tasks and a daily ride to their other camp activities in this exciting program. Campers will travel to a local ranch for their instruction and rides.



**OPPORTUNITIES FOR HIGH SCHOOL STUDENTS**

**Senior High Theka**

**ΘHKA**

Gr. 10-12

July 3-15

\$260



Interested in environmental studies and studying the Christian tradition? ΘHKA lasts for two weeks: one week devoted to learning and the other week spent working with a Small Group Leader and campers.

**Golf II**

July 31-Aug. 5

\$285



Brush up your golf skills, or develop a love for the game for the first time! LOMC will provide you with excellent instruction and practice time. Bring your own clubs, balls, and your golf enthusiasm. We'll take you to a local golf course to help you build your game through regular play and scrambles.

**Theatre Arts II**

Gr. 8-10

Aug. 7-12

\$270



An extension of Theatre Arts I, this camp will build on the basics of acting and go behind the scenes delving into makeup, set construction and many other aspects of theatre not seen by the audience.

**Venture III**

Aug. 7-12

\$270



This camp is perfect for the senior high youth who enjoys the community and action of camp. You'll participate in a wide range of activities including swimming and a day trip to a local indoor climbing wall.

**Symbol Key**



Camper stays in retreat houses



Camper stays in hogans or tents



Program is ideal for first-time campers

## ABOUT THE THEME: "Fueling the Fire"

As we make our journey through life, there are times when we are lost, unsure, in trouble and afraid. These are times when we are searching to fuel the spark we feel inside. We search for an answer and find it in our relationships. We are guided on our quest by the Holy Spirit through the Gospel and fan the flames throughout the world, our Church and inside ourselves.

This summer at LOMC, we will explore how the Spirit works in our lives and keeps us in the true faith.

### GENERAL INFORMATION

#### Health & Safety

Medical services are available 24 hours a day. There is a camp nurse and most LOMC staff are certified in first aid and CPR. You and your child can help maintain a healthy and safe environment at LOMC by following safety guidelines such as those related to swimming and boating. Some programs require the campers to provide their own personal safety equipment (Please see Special Safety Information).

#### Financial Assistance Available

Do not let the lack of money prevent you or your child from attending LOMC this summer! Many congregations provide financial assistance through "camperships". Contact your pastor or LOMC for details.

#### Summer Camp for Special Needs Youth

LOMC provides residential camping opportunities for grade 4-12 youth with special needs in a mainstreamed situation. If you are interested in the camp programs that can serve youth with disabilities, request an intake interview with LOMC before registering. This interview will evaluate the opportunities available for your child. LOMC serves youth who can be mainstreamed, dress and feed themselves, are toilet trained and have an attention span which allows some group discussion. Youth who are blind, deaf, non-ambulatory, learning disabled and EMH are potential candidates.

#### Registration and Payment

We accept Mastercard, Visa, or Discover cards as well as checks for deposits or payments in full.

Please fill in the appropriate information on the registration form. Registrations will be accepted by mail, fax, or online.

All faxed registrations must be accompanied by a credit card. The deposit or the full camp fee will be charged to that card. Please indicate your intent on the registration form. We do not call to confirm receipt of fax.

NO PHONE REGISTRATIONS WILL BE ACCEPTED. Please do not send cash.

Registration deposits (\$50 per session) cannot be refunded or transferred after June 1, 2005.

The grades for each camp are the grades that the children are entering next fall.

See LOMC on the Web! Check out the summer schedule and see what's going on all the time at LOMC. [www.lomc.org](http://www.lomc.org)

#### Roommates Requests

Two campers who want to room together may mutually submit each other's names provided they are the same gender and age/grade, in the same program, and that the request is made in advance, in writing on the registration form.

## CAMP ACTIVITIES FOR EVERYONE

Each experience and activity of every youth camp at LOMC is based on the program theme, *Fueling the Fire*. Activities are designed for the age level of the participants.

Each day a different Biblical idea is presented in Worship and Bible Study/Learning Experiences.

#### Your fees include:

- ◆ Worship
- ◆ Arts and Crafts
- ◆ Swimming
- ◆ Outdoor Recreation
- ◆ Campfires & Singing
- ◆ Nature Experiences
- ◆ 3 Meals a day
- ◆ Evening Snacks
- ◆ Health Services
- ◆ Lodging
- ◆ Skilled and Trained Leaders
- ◆ Specialized Activities or Instruction for the Specific Program
- ◆ Transportation for designated off-site activities.

### LOMC's LOCATION

LOMC is located two miles south of Oregon, IL on Illinois Route 2. The town of Oregon is at the intersection of Illinois Routes 64 and 2, about 30 miles southwest of Rockford. Driving to LOMC is about 1.5 hours from Chicago and the Quad-Cities, 2 hours from Peoria, 3 hours from Champaign and 5 hours from St. Louis.

◆ "The Food Distribution Program is available to all eligible participants without regard to race, national origin, color, sex, or handicap. Any person who believes that he or she has been discriminated against in a USDA-related activity should write immediately to the Secretary of Agriculture, Washington, D.C."

◆ Published by Lutheran Outdoor Ministries Center, Oregon, IL.

◆ Typesetting by Lutheran Outdoor Ministries Center, Oregon, IL. and printing by Freeport Press, Freeport, IL.

### Confirmation of Registration

The confirmation of your registration is made by mail and includes:

◆ Camper Health Form — It is camp policy that all campers have on file at LOMC a current health history and examination form. This form must have been completed and signed by a physician after September 1, 2003.

◆ What to Bring List — A list of suggested clothing, bedding and other essentials helps the camper pack.

◆ Parents' Information — Concerns of the parents and campers are addressed in order to help them prepare for and enjoy the camper's time at LOMC.

### Resident Camps

Arrival & Check-in: 2-4 p.m., Sundays

Departure: After Friday Night Festival

Exceptions to this are Voyageur, Early Ventures and Spelunking. See program description for details.

### Special Safety Information

*In order to help insure their safety, campers in certain programs must bring their own personal safety equipment or possess certain skills. Sailing and Fishing II campers must pass a swimming test that demonstrates they can swim 50 yards and tread water for 10 minutes without a flotation device.*



## 2005 YOUTH CAMP REGISTRATION

Please Print or type. Please Use One Form For Each Child and For Each Camp.

Camper's Name \_\_\_\_\_  
 Address \_\_\_\_\_  
 City \_\_\_\_\_ State \_\_\_\_\_ Zip \_\_\_\_\_  
 Parent's Daytime Phone Number (area code) \_\_\_\_\_ - \_\_\_\_\_ - \_\_\_\_\_  
 Congregation \_\_\_\_\_  
 City \_\_\_\_\_ State \_\_\_\_\_  
 Email Address \_\_\_\_\_  
 Has your address changed from the previous summer? \_\_\_\_\_

***Our child has permission to take part in all camp activities under LOMC supervision, including off-site activities. Pictures of our child may be used by LOMC for promotional purposes. Our child will also comply with the conditions for specified camps.***

Parent/Guardian Signature \_\_\_\_\_  
 Mother's Name \_\_\_\_\_ Father's Name \_\_\_\_\_  
 Grade camper enters in fall \_\_\_\_\_ Age \_\_\_\_\_ Birthdate \_\_\_\_/\_\_\_\_/\_\_\_\_  
 Gender \_\_\_M\_\_\_F

Camp and dates desired:            Camp Program                            Dates  
 1st Choice \_\_\_\_\_  
 2nd Choice \_\_\_\_\_

Did the camper attend LOMC last summer? \_\_\_\_\_ Yes \_\_\_\_\_ No  
 Does the camper have any disabilities or severe allergies needing special attention by the LOMC staff?  
 If yes, please explain on a separate piece of paper. \_\_\_\_\_ Yes \_\_\_\_\_ No

For Mastercard, Visa or Discover

Cardholder's Name (please print) \_\_\_\_\_  
 Cardholder address if different from above: \_\_\_\_\_  
 \_\_\_\_\_  
 Card Name \_\_\_\_\_  
 Number \_\_\_\_\_  
 Expiration Date \_\_\_\_\_ Amount to be charged \$ \_\_\_\_\_

Signature \_\_\_\_\_

***Please return and make check payable to: Lutheran Outdoor Ministries Center, P.O. Box 239, Oregon, IL, 61061***

**Deposits cannot be refunded or transferred after June 1, 2005.**

Your registration will be confirmed and will include a what-to-bring list, health form, arrival and departure times and parent/guardian information.

Please check the deposit amount that is enclosed:

\_\_\_\_\_ \$50.00 for all LOMC  
 Resident Camps  
**OR**  
 \_\_\_\_\_ Full camp fee  
 \$ \_\_\_\_\_ Amount enclosed

### OFFICE USE ONLY

Camp Fee \$ \_\_\_\_\_  
 Camp Deposit \$ \_\_\_\_\_  
 Other Credits \$ \_\_\_\_\_  
 Balance Due \$ \_\_\_\_\_

### Let LOMC run your VBS!

Take the guesswork out of your church's Vacation Bible School this summer. Our enthusiastic and capable staff will bring LOMC's summer theme, songs, crafts and fun to your congregation. Your church will need to feed and house our staff while they are with you. The cost is \$270 per staff member and registration is limited to staff availability. Call Thomas Williams at (815) 732-2220 for more information.

LOMC is fully accredited by the American Camp Association.

All Staff are trained in First Aid and CPR and many are certified lifeguards.



# Choices for 6th-8th graders

## Explorer

June 26-July 1  
July 3-8, July 10-15  
\$240



Explorer takes you one step beyond Discoverer Camp. Your week of true exploration is in the ravines of LOMC, in the hills of Castle Rock State Park, and on the waters of the Rock River. You take the popular overnight river canoe trip and improve your outdoor living skills such as pitching a tent and cooking meals over a camp fire.

## Sailing

June 26-July 1  
\$290



Have you ever watched sailboats gliding over the water and wished you could learn to sail? This camp is for you. Participants will camp out in tents at Paul's Pond while they learn the principles of

sailing, including steering, tacking and sailboat care. (Please see Special Safety Information)

## Construction Camp

July 17-22  
\$255



Construction Camp is the camp for you if you enjoy working with your hands outside and watching projects take shape. You will learn basic carpentry skills while working on various projects around LOMC.

## Night Owl

July 31-Aug. 5  
\$250



This camp gives you the opportunity to discover LOMC at night while the camp is quiet! There is a whole other LOMC that awaits you while everyone else is sleeping. You'll ease your way

into being awake longer each night and sleeping later into the day. Night hikes and other special activities for nighttime will add to your explorations and adventure.

## Junior High Outpost

Aug. 7-12  
\$240



If you are an outdoor person, then Outpost is geared just for you. During this exhilarating week you learn new adventure skills in the out-of-doors while hiking and canoeing for two days. You share in the planning of your group's activities.

## Theatre Arts I

July 10-15  
\$270



You can be a star in Theatre Arts camp! Set design, acting, dance, makeup,

clowning, costuming and pantomime can all be a part of your preparation for Friday Night Festival.

## Golf I

July 17-22  
\$285



You can practice your drives and improve your skill at getting that little white ball in the hole. LOMC will provide you with excellent instruction and practice time. Bring your own clubs, balls and your golf enthusiasm and we'll take you to a local golf course.

## Fishing II

July 17-22  
\$265



Choose Fishing II if you already know the basics and want to advance to bottom fishing, filleting, and cooking. (Please see Special Safety Information)

## Venture II

June 26-July 1  
July 3-8  
July 10-15  
July 17-22



July 31-Aug. 5, Aug. 7-12  
\$255

Venture II is for first-time older campers or campers who enjoyed Venture I and would like to return.

## Encounter II

July 24-29  
\$255



Encounter II is perfect for Confirmation-age campers as it teaches Biblical concepts through direct experience with nature and fellow campers. Activities will include: Unique art projects, animal tracking and casting, pioneer cooking, wilderness skills, and an evening at the Byron Planetarium.

## Sports II

July 24-29  
\$255



An extension of Sports I, campers will learn the finer points of games they have played before.

## Trail Riders II

July 3-8  
\$455



Campers will go beyond the basics of horseback riding and further explore riding techniques and animal care while still enjoying camp life at LOMC.

## Voyageur

Gr. 6-9  
July 31-Aug. 9  
\$425



For ten days you put your camping skills to the test with the support of an outdoor leader. Much like the voyageurs of old, you journey into the back country stretches of LOMC and Castle Rock State Park.

You live in tents and pack up for a three-day canoe trip on the Rock River.

## Spelunking

Gr. 7-10  
July 10-15  
July 24-29  
\$300



In case you are wondering, "spelunking" means cave exploring. That is exactly what you do on this exciting caving adventure at Meramec State Park in Missouri. You learn about caves and climb, crawl or canoe into and out of several primitive and incredibly beautiful caves. You'll need to provide your own grubby clothes, a hard hat and several flashlights. LOMC provides the headlamp.

Arrival: 10 a.m. on Sunday

## LOMC Choir Camps



### Swing Choir Tour

July 24-Aug. 5  
Gr. 9-12  
\$400



Travel to 10 Illinois churches and sing and dance as a member of LOMC's Swing Choir after several days of on-site rehearsals. Tour performers stay with host families and travel to the different locations on a coach bus under the supervision of LOMC staff members. Prior participation in Swing Choir camp is preferred but not required. Those who have not participated in swing choir camp will need to include a letter of recommendation from a choir director.

### Junior Choir

Gr. 4-7  
July 17-22  
\$275



If you enjoy singing, spend a week at LOMC under the guidance of a caring director. In addition to the usual daily camp activities, you'll have fun rehearsing for your concert at the Friday Night Festival.

### Swing Choir

Gr. 6-9  
July 10-15  
\$310



If you enjoy combining upbeat "jazzy" songs with dance, then the popular Swing Choir camp is for you. Two daily rehearsals help you learn the notes and moves as the choir pulls together for a concert at the Friday Night Festival. Choir members receive a Swing Choir t-shirt.

Register for your LOMC  
experience online at  
[www.lomc.org](http://www.lomc.org)



## **NEW at LOMC! - SALT camp for youth groups**

For church youth groups interested in a service-oriented experience this summer, LOMC is offering a new program that will mix a camp experience with daily opportunities in neighborhood rehabilitation projects, housing construction and opportunities for service with senior citizens. Service And Leadership Training Camp is a chance for junior high and high school groups to see how it does not take a trip around the world to find an opportunity to help others.

Speakers and daily Bible studies, as well as team-building activities, help round out an experience sure to engage all participants.

Campers will live on Hogan Hill, which can accommodate up to 40 participants, and will experience many unique camp activities, such as a half-day canoe trip, cookouts, campfires, swimming in LOMC's pool and communing with nature. Call Craig Watters at 815-732-2220 for more information.

SALT Camp costs \$250 per camper.

<u>Dates</u>	<u>Age Group</u>
June 19-24	Grades 6-8
June 26-July 1	Grades 9-12
July 10-15	Grades 6-8
July 17-22	Grades 6-8
July 24-29	Grades 6-8
July 31-Aug. 5	Grades 9-12

## Family Camp at LOMC

Pack up your family for a unique adventure, including a small town Fourth of July celebration. Memories will be made as you relax by a campfire, go swimming and canoeing, and explore the Word of God. Adults can also enjoy some free time while LOMC staff lead your children in activities.



This year at LOMC, family campers have the option of staying for a full-week experience or can choose to come for a half-week stay. Lodging is available in Retreat Houses or Freedom Tree Village.

### Retreat House Accommodations

	Full Week July 3-8	Half Week July 3-5
1st Adult	\$250	\$135
2nd Adult	\$215	\$115
Youth 4-12	\$190	\$100

### FTV Accommodations

	Full Week	Half Week
	\$295	\$160
	\$250	\$140
	\$210	\$120

Please attach list of family members and ages to registration form. Enclose deposit for each family member.



**A Ministry of ELCA Congregations  
in Illinois and Missouri**

**LUTHERAN OUTDOOR MINISTRIES CENTER**

**P.O. Box 239  
Oregon, Illinois 61061  
815-732-2220**

**PRE-SORTED STANDARD  
U.S. POSTAGE  
PAID  
OREGON, IL 61061  
PERMIT NO. 29**