

LOMC Is:

(Continued from page 1)

herbs and grasses, mushrooms and fungi, soils, animals (deer to shrews), birds, and on and on. The Center has several areas of native Illinois prairie.

LOMC Is Buildings

There are five retreat houses, two large meeting areas, a dining hall, pool and bathhouse, pavillions, administration building, a summer house, and hogans (tents on platforms for warm weather use).

Each retreat house can accommodate 32 people. There are four separate bedrooms, two washrooms, and a conference room. The retreat houses are arranged so that retreat and conference groups can be isolated from each other.

The dining hall will seat 200 people at round tables. The dining hall lounge, which is graced by a beautiful fire place, can handle up to 150 comfortably.

The dining hall and retreat houses are heated. All buildings are air conditioned, except for one retreat house. The buildings have also been designed for the physically handicapped.

LOMC Is Activities

Outdoor worship services can be conducted in many beautiful settings.

Nature studies can be done in a variety of habitats. A phenology is available upon request.

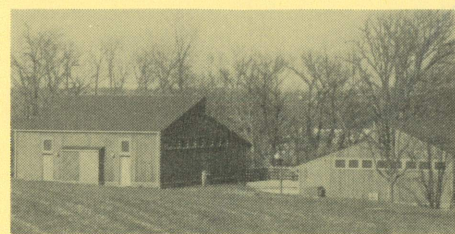
In addition to traditional games (e.g. baseball and volleyball) there are locations for stress/challenge activities, orienteering, hashing, sledding, and tobogganing. Swimming is available in the pool which is open late Spring to early Fall. Canoeing can be done on the Rock River near by. The Center is also excellent for cross-country skiing.

Several special days are planned. Before April 15 portions of the native Illinois prairie are burned (for land management purposes). Around May 1 turtles can be seen coming out of hibernation.

LOMC Is Camping Facilities

Families and groups can tent and trailer camp. There are no hookups for water and electricity. Toilets are in the immediate area. Complete washroom facilities are at the pool.

Picnicking can be done at any time.



One of two retreat house villages.

A pavillion is available in the event of rain.

Camping and picnicking can be done May through October.

LOMC Is Amid Many Interesting Resources

Some of the major attractions in the immediate area of the Center are the John Deer Home in Grand Detour, Sinnissippi Saw Mill and Loggers Trail. Blackhawk Statue, Lorado Taft Outdoor Education Campus of the Northern Illinois University, Stronghold Castle, White Pines State Park, Byron Nuclear Plant, farms, sales barns, and a very scenic portion of the Rock River. Tennis, golf, horseback riding, and roller skating are within a short drive of the Center.

For Further Information

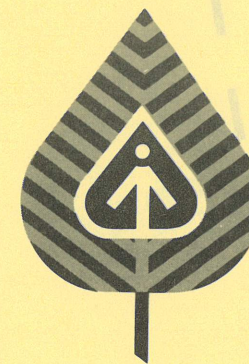
Please contact the Lutheran Outdoor Ministries Center Office for further information and fees. Reservations can be made by phone or letter.

The Map of the Center

The map of LOMC was made possible by gifts from members and friends of Cambridge Lutheran Church, Cambridge, Illinois, given in memory of Bernice Anderson.

NON-PROFIT ORGANIZATION
U.S. POSTAGE
PAID
PERMIT NO. 29
OREGON, IL 61061
Lutheran Outdoor Ministries Center

Lutheran Outdoor Ministries Center



BIMONTHLY NEWSLETTER

May 1, 1978

Vol. 2, No. 3

BOX 239, OREGON, ILLINOIS 61061 • 815/732-2220 • ILLINOIS SYNOD, L.C.A.

SPECIAL SYNOD CONVENTION ISSUE

A Description of Programs and Facilities

LOMC Is . . .

The Lutheran Outdoor Ministries Center in Oregon, Illinois, is owned and operated by the Illinois Synod of the Lutheran Church in America. The Center is dedicated to a unique ministry to and with people in an outdoor environment, a place for retreat, for reflection, and for learning opportunities. The facility is open year 'round and is designed to serve people of all ages.

People can participate in programs conducted by the Center. Also, Churches and schools can rent facilities for religious and educational programs of their own.

The Center is designed for groups of varying sizes: 30 or less, 60, 120-150. Groups may use the facilities for one day, weekend, weekday, and full week events.

LOMC is many things: the Church-at-work in the out-of-doors

people
programs
land
buildings
camping facilities

LOMC Is the Church-at-Work In the Out-of-Doors

Taking advantage of a beautiful and diverse environment, the Illinois Synod provides places and moments where people can participate in—

an intentional Christian Community
an intentional religious educational atmosphere
an intentional out-of-door setting

LOMC Is People

The Center is an investment in people. Facilities, land, and programs focus upon the spiritual and educational needs of people. People from all walks of life and many places can gather together.

There is a year 'round staff composed of executive director, property manager, food service manager, office, program, maintenance, and kitchen staff. During the summer the staff increases as college students and volunteers serve as program and support staff.

LOMC Is Programs

Many types of programs happen at the Center. There are summer resident camps for children grades 4-12: pioneer, junior choir, equestrian, cycling, first (ad)venture, golf and tennis, sports, and confirmation. There is also a family camp.

Bible Study, worship, environmental education, play, developing meaningful friendships, swimming, arts and crafts, and the learning of responsibility are incorporated into all programs.

There are trip camps for high school youth, both canoeing and backpacking.

In the Fall and Spring there are one day events and retreats for Senior Citizens. The Center also holds one major high school retreat each of these two seasons.

In the Winter there are Worship/Ski events for families, young marrieds/young adults, and high schoolers offered at an alternate site.

The LOMC Staff is available to consult and lead retreats for groups. Information and fee structure regarding this is available upon request. The staff will also assist with retreats at other locations in the Synod.

There are opportunities for outdoor education throughout the year. The variety of natural habitats provides a wide range of learning centers.

LOMC Is Land

730 acres, over one square mile of varying topography, have captured the imagination of many people. 260 acres are tillable. 470 acres are used for creative and interesting program activities.

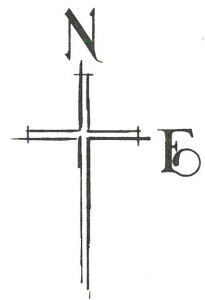
There are many types of trees, flowers,
(Continued on back page)

Scene along Gale Creek



Dining Hall and Lounge.

ILLINOIS SYNOD, L.C.A.
LUTHERAN OUTDOOR MINISTRIES CENTER
BOX 239
OREGON, ILLINOIS 61061



3°E

GALE CREEK

ROUTE 2

25 MAIN
ENTRANCE

LUTHERAN OUTDOOR MINISTRIES CENTER

Oregon, Illinois 61061

1. Outcamp
2. J B—campfire site
3. Levi's cave
4. Stony Point—campfire site
5. Freedom Tree
6. Timbers meeting basement
7. Timbers B Retreat House
8. Timbers A Retreat House
9. Timbers Village parking
10. Meadows B Retreat House
11. Meadows meeting basement
12. Meadows A Retreat House
13. New Revival campfire site
14. Pole Barn
15. Dining Hall and Lounge
16. Hillside Retreat House
17. Pool and bathhouse
18. Dairy Barn
19. Festival—campfire site
20. Administration Building
21. Barber House parking
22. Barber House
23. Old Revival Campfire Site
24. Muhlenberg Campfire Site
25. Property Manager's Residence
26. Proposed hogan area
27. Hogan/tent area
28. Picnic area
29. Backbone Campfire Site
30. Devil's Backbone Outcropping
31. Play Field
32. Stress/Challenge Course
33. Timbers Campfire Site
34. Play Field
35. Administration Parking
36. Corral
37. Play Field
38. Cricket Frog Pond
39. Turtle Hill
40. Railroad Ridge
41. Devil's Backbone Road
42. Tent/Trailer Area